

U. PORTO



ICBAS | INSTITUTO DE CIÊNCIAS
BIOMÉDICAS ABEL SALAZAR
**SCHOOL OF MEDICINE AND
BIOMEDICAL SCIENCES**

ICBAS Publications

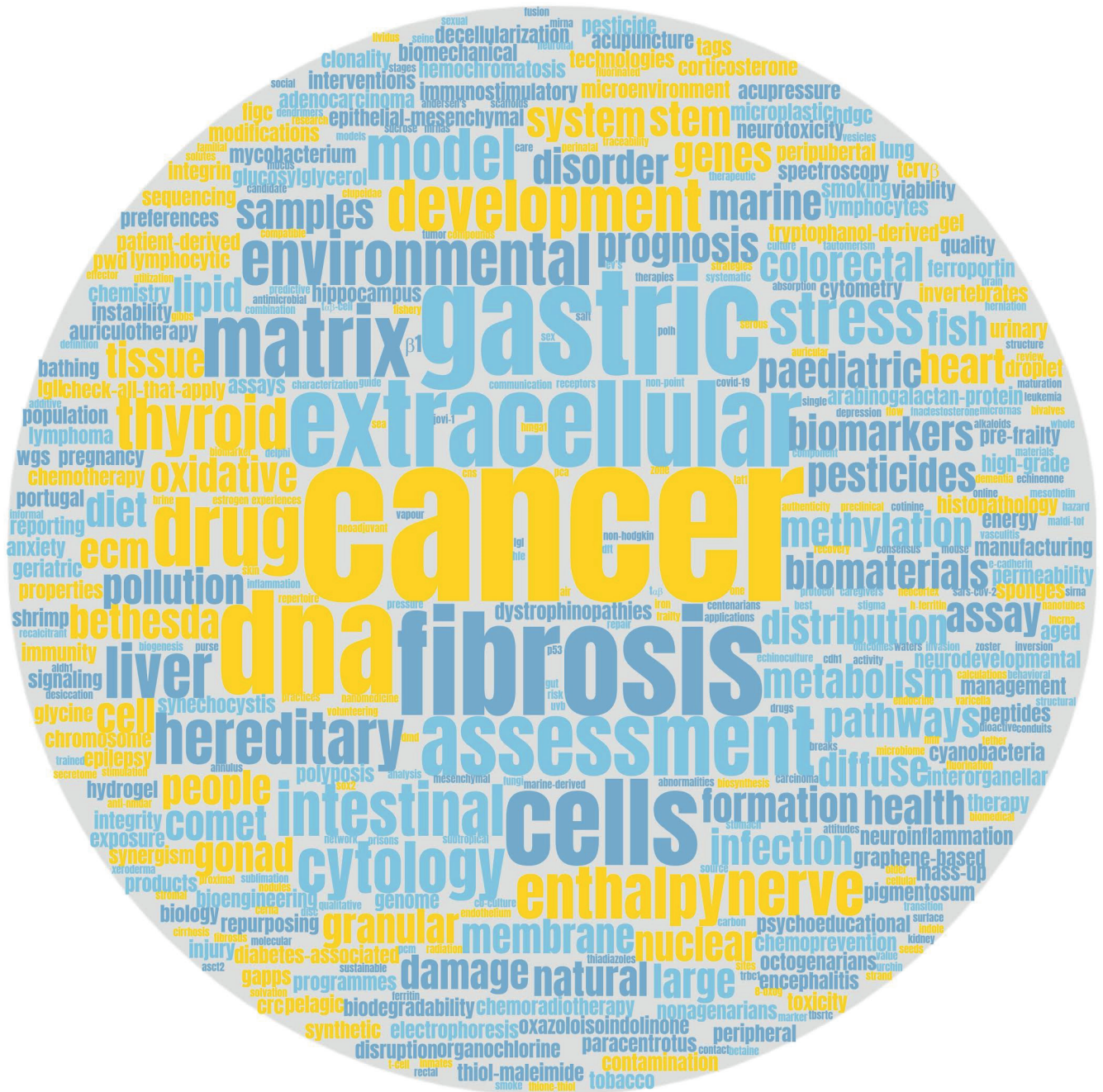
→ (indexed until January 31, 2022)

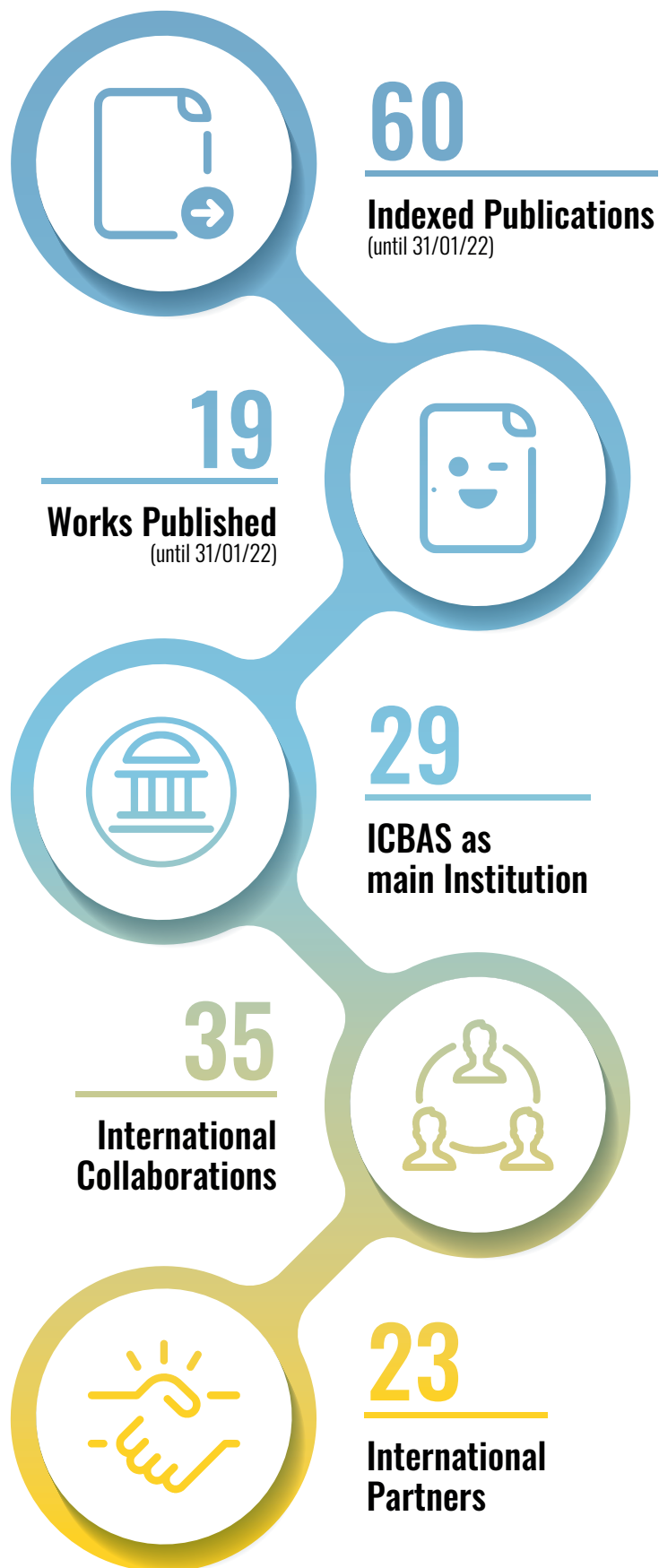
Word Cloud

KEYWORDS OF THE MONTH

ICBAS Publications

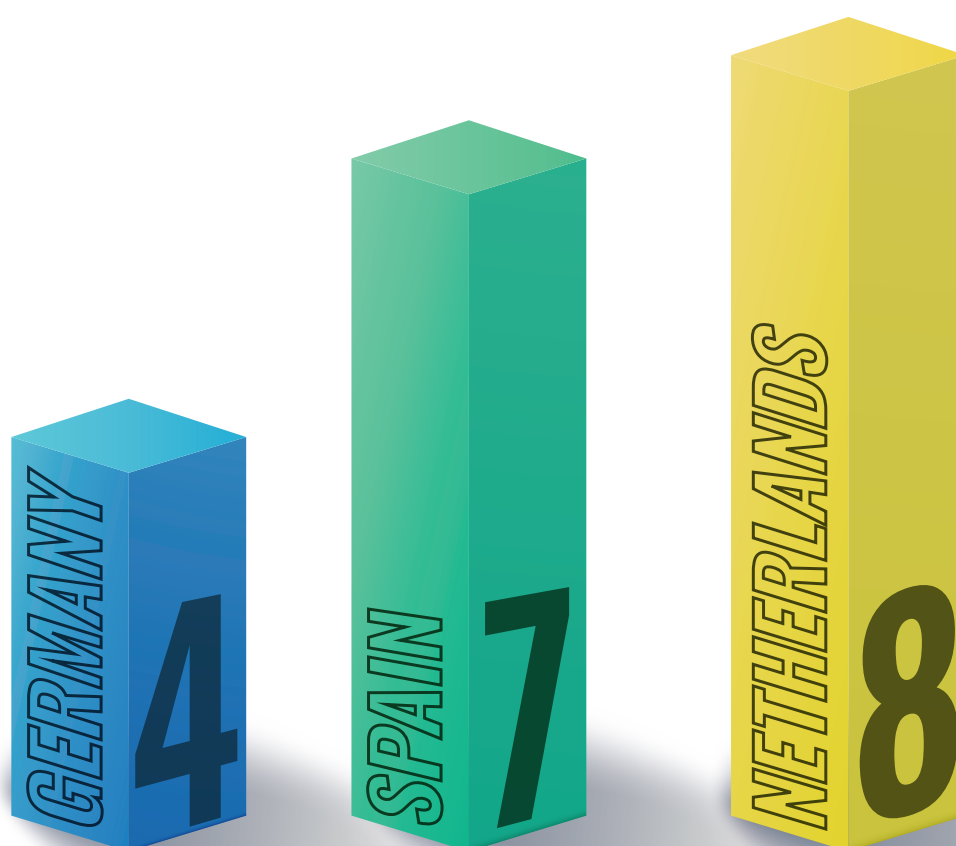
→ (indexed until January 31, 2022)





Top 3 International Partners

ICBAS Publications
→ (indexed until January 31, 2022)



AUTHORS	TITLE	LINK
FERREIRA A.V., DOMIGUÉZ-ANDRÉS J., NETEA M.G.	THE ROLE OF CELL METABOLISM IN INNATE IMMUNE MEMORY	READ
CASTRO A.L., RIBEIRO-MACHADO C., OLIVEIRA C.M., TEIXEIRA G.Q., NEIDLINGER-WILKE C., PEREIRA P., VAZ R., BARBOSA M.A., GONÇALVES R.M.	FIBROTIC ALTERATIONS IN HUMAN ANNULUS FIBROSUS CORRELATE WITH PROGRESSION OF INTERVERTEBRAL DISC HERNIATION	READ
PLITTA-MICHALAK B.P., RAMOS A.A., PUPEL P., MICHALAK M.	OXIDATIVE DAMAGE AND DNA REPAIR IN DESICCATED RECALCITRANT EMBRYONIC AXES OF ACER PSEUDOPLATANUS L.	READ
SCHROEDER R., SCHWINGEL P.R., PINTO E., ALMEIDA A., CORREIA A.T.	STOCK STRUCTURE OF THE BRAZILIAN SARDINE SARDINELLA BRASILIENSIS FROM SOUTHWEST ATLANTIC OCEAN INFERRED FROM OTOLITH ELEMENTAL SIGNATURES	READ
HAMED M., COELHO E., BASTOS R., EVTUGUIN D.V., FERREIRA S.S., LIMA T., VILANOVA M., SILVA A., COIMBRA M.A., BOUGATEF A.	ISOLATION AND IDENTIFICATION OF AN ARABINOGALACTAN EXTRACTED FROM PISTACHIO EXTERNAL HULL: ASSESSMENT OF IMMUNOSTIMULATORY ACTIVITY	READ
FREITAS J., SILVA P., PERESTRELO R., VAZ-PIRES P., CÂMARA J.S.	IMPROVED APPROACH BASED ON MALDI-TOF MS FOR ESTABLISHMENT OF THE FISH MUCUS PROTEIN PATTERN FOR GEOGRAPHIC DISCRIMINATION OF SPARUS AURATA	READ
PEREIRA C., PARK J.-H., CAMPELOS S., GULLO I., LEMOS C., SOLORZANO L., MARTINS D., GONÇALVES G., LEITÃO D., LEE H.-J., KONG S.-H., ANDRÉ A., BORGES C., ALMEIDA D., WÄLBHY C., ALMEIDA R., KIM W.H., CARNEIRO F., YANG H.-K., ALMEIDA G.M., OLIVEIRA C.	COMPARISON OF EAST-ASIA AND WEST-EUROPE COHORTS EXPLAINS DISPARITIES IN SURVIVAL OUTCOMES AND HIGHLIGHTS PREDICTIVE BIOMARKERS OF EARLY GASTRIC CANCER AGGRESSIVENESS	READ
SEZGIN D., O'DONOVAN M., WOO J., BANDEEN-ROCHE K., LIOTTA G., FAIRHALL N., RODRÍGUEZ-LASO A., APÓSTOLO J., CLARNETTE R., HOLLAND C., ROLLER-WIRNSBERGER R., ILLARIO M., MAÑAS L.R., VOLLENBROEK-HUTTEN M., DOĞU B.B., BALCI C., PERNAS F.O., PAUL C., AHERN E., ROMERO-ORTUNO R., MOLLOY W., COONEY M.T., O'SHEA D., COOKE J., LANG D., HENDRY A., KENNELLY S., ROCKWOOD K., CLEGG A., LIEW A., O'CAOIMH R.	EARLY IDENTIFICATION OF FRAILTY: DEVELOPING AN INTERNATIONAL DELPHI CONSENSUS ON PRE-FRAILTY	READ
MOURA D., PEREIRA R.F., GONÇALVES I.C.	RECENT ADVANCES ON BIOPRINTING OF HYDROGELS CONTAINING CARBON MATERIALS	READ
BAIÃO L.F., ROCHA F., SÁ T., OLIVEIRA A., PINTADO M., LIMA R.C., CUNHA L.M., VALENTE L.M.P.	SENSORY PROFILING, LIKING AND GONAD COMPOSITION OF SEA URCHIN GONADS FED SYNTHETIC OR NATURAL SOURCES OF β -CAROTENE ENRICHED DIETS	READ
DUARTE D., RÉMA A., AMORIM I., VALE N.	DRUG COMBINATIONS: A NEW STRATEGY TO EXTEND DRUG REPURPOSING AND EPITHELIAL-MESENCHYMAL TRANSITION IN BREAST AND COLON CANCER CELLS	READ
RAŠKOVIĆ B., BERILLIS P.	SPECIAL ISSUE ON THE HISTOPATHOLOGY OF AQUATIC ANIMALS	READ
AIRES F., RODRIGUES D., LAMAS M.P., HERDEIRO M.T., FIGUEIRAS A., OLIVEIRA M.J., MARQUES M., PINTO A.T.	C-REACTIVE PROTEIN AS PREDICTIVE BIOMARKER FOR RESPONSE TO CHEMORADIO THERAPY IN PATIENTS WITH LOCALLY ADVANCED RECTAL CANCER: A RETROSPECTIVE STUDY	READ
NUNES M., PACHECO F., COELHO R., LEITÃO D., RICARDO S., DAVID L.	MESOTHELIN EXPRESSION IS NOT ASSOCIATED WITH THE PRESENCE OF CANCER STEM CELL MARKERS SOX2 AND ALDH1 IN OVARIAN CANCER	READ
LEIRO V., SPENCER A.P., MAGALHÃES N., PÊGO A.P.	VERSATILE FULLY BIODEGRADABLE DENDRITIC NANOTHERAPEUTICS	READ
MARTINS-FERREIRA R., LEAL B., CHAVES J., LI T., CIUDAD L., RANGEL R., SANTOS A., MARTINS DA SILVA A., PINHO COSTA P., BALLESTAR E.	EPILEPSY PROGRESSION IS ASSOCIATED WITH CUMULATIVE DNA METHYLATION CHANGES IN INFLAMMATORY GENES	READ
FERREIRA C., TRINDADE F., FERREIRA R., NEVES J.S., LEITE-MOREIRA A., AMADO F., SANTOS M., NOGUEIRA-FERREIRA R.	SEXUAL DIMORPHISM IN CARDIAC REMODELING: THE MOLECULAR MECHANISMS RULED BY SEX HORMONES IN THE HEART	READ
MACHADO A.M., FERNÁNDEZ-BOO S., NANDE M., PINTO R., COSTAS B., CASTRO L.F.C.	THE MALE AND FEMALE GONAD TRANSCRIPTOME OF THE EDIBLE SEA URCHIN, PARACENTROTUS LIVIDUS: IDENTIFICATION OF SEX-RELATED AND LIPID BIOSYNTHESIS GENES	READ
SILVA A.L.R., GONÇALVES J.M., MORAIS V.M.F., RIBEIRO DA SILVA M.D.M.C.V	THERMODYNAMIC PROPERTIES OF 2-MERCAPTO-, 2,5-DIMETHYL- AND 2-MERCAPTO-5-METHYL-1,3,4-THIAZIAZOLE	READ
IVORRA L., CRUZEIRO C., RAMOS A., TAGULAO K., CARDOSO P.G.	HOW CAN ENVIRONMENTAL CONDITIONS INFLUENCE DICOFOL GENOTOXICITY ON THE EDIBLE ASIATIC CLAM, MERETRIX MERETRIX?	READ
FERREIRA E.A., PACHECO C.C., RODRIGUES J.S., PINTO F., LAMOSA P., FUENTE D., URCHUEGUÍA J., TAMAGNINI P.	HETEROLOGOUS PRODUCTION OF GLYCINE BETAINE USING SYNECHOCYSTIS SP. PCC 6803-BASED CHASSIS LACKING NATIVE COMPATIBLE SOLUTES	READ
MONTE F., GARRIDO M., PEREIRA GUEDES T., REIS J., PORTO G., PEDROTO I.	HEMOCHROMATOSIS AND XERODERMA PIGMENTOSUM: TWO (UN)SUSPICIOUS NEIGHBORS	READ
SALSELAS M., PINTO DA COSTA M.	THE EXPERIENCE OF VOLUNTEERS IN PRISONS IN PORTUGAL: A QUALITATIVE STUDY	READ
DE-CASTRO A.R.G., RODRIGUES D.R.M., DE-CASTRO M.J.G., VIEIRA N., VIEIRA C., CARVALHO A.X., GASSMANN R., ABREU C.M.C., DANTAS T.J.	WDR60-MEDIATED DYNEIN-2 LOADING INTO CILIA POWERS RETROGRADE IFT AND TRANSITION ZONE CROSSING	READ
ALMEIDA C., TEIXEIRA A.L., DIAS F., MACHADO V., MORAIS M., MARTINS G., PALMEIRA C., SOUSA M.E., GODINHO I., BATISTA S., COSTA-SILVA B., MEDEIROS R.	EXTRACELLULAR VESICLES DERIVED-LAT1 mRNA AS A POWERFUL INDUCER OF COLORECTAL CANCER AGGRESSIVE PHENOTYPE	READ
CANBERK S., BARROCA H., GIRÃO I., AYDIN O., UGUZ A., ERDOGAN K., TASTEKIN E., BONGIOVANNI M., SOARES P., MÁXIMO V., SCHMITT F.	PERFORMANCE OF THE BETHESDA SYSTEM FOR REPORTING THYROID CYTOLOGY IN MULTI-INSTITUTIONAL LARGE COHORT OF PEDIATRIC THYROID NODULES: A DETAILED ANALYSIS	READ
VASCONCELOS I., ADÃO R., RADEMAKER M.T., LEITE-MOREIRA A.F., FONTES-SOUSA A.P., BRÁS-SILVA C.	UROCORTINS AS BIOMARKERS IN CARDIOVASCULAR DISEASE	READ

AUTHORS	TITLE	LINK
MUÑOZ-GARCÍA N., MORÁN-PLATA F.J., VILLAMOR N., LIMA M., BARRENA S., MATEOS S., CALDAS C., VAN DONGEN J.J.M., ORFAO A., ALMEIDA J.	HIGH-SENSITIVE TRBC1-BASED FLOW CYTOMETRIC ASSESSMENT OF T-CELL CLONALITY IN TAB-LARGE GRANULAR LYMPHOCYTIC LEUKEMIA	READ
COSTA C.F.F.A., SAMPAIO-MAIA B., ARAUJO R., NASCIMENTO D.S., FERREIRA-GOMES J., PESTANA M., AZEVEDO M.J., ALENCASTRE I.S.	GUT MICROBIOME AND ORGAN FIBROSIS	READ
LOPES B., SOUSA P., ALVITES R., BRANQUINHO M., SOUSA A.C., MENDONÇA C., ATAYDE L.M., LUÍS A.L., VAREJÃO A.S.P., MAURÍCIO A.C.	PERIPHERAL NERVE INJURY TREATMENTS AND ADVANCES: ONE HEALTH PERSPECTIVE	READ
MOURA J., DUARTE S., SARDOEIRA A., NEVES-MAIA J., DAMÁSIO J., TAIPA R., CARNEIRO P., NEVES E., CAMPAR A., SANTOS E.	ANTI-NMDAR ENCEPHALITIS AND COVID-19 IN A PATIENT WITH SYSTEMIC PANCA-VASCULITIS AND RECURRENT VARICELLA ZOSTER INFECTION	READ
MARQUES-MAGALHÃES Â., CRUZ T., COSTA Â.M., ESTÉVÃO D., RIOS E., CANÃO P.A., VELHO S., CARNEIRO F., OLIVEIRA M.J., CARDOSO A.P.	DECELLULARIZED COLORECTAL CANCER MATRICES AS BIOACTIVE SCAFFOLDS FOR STUDYING TUMOR-STROMA INTERACTIONS	READ
TELES S., FERREIRA A., PAÚL C.	ATTITUDES AND PREFERENCES OF DIGITALLY SKILLED DEMENTIA CAREGIVERS TOWARDS ONLINE PSYCHOEDUCATION: A CROSS-SECTIONAL STUDY	READ
CRISÓSTOMO L., VIDEIRA R.A., JARAK I., STARČEVIĆ K., MAŠEK T., RATO L., RAPOSO J.F., BATTERHAM R.L., OLIVEIRA P.F., ALVES M.G.	INHERITED METABOLIC MEMORY OF HIGH-FAT DIET IMPAIRS TESTICULAR FATTY ACID CONTENT AND SPERM PARAMETERS	READ
ABRANTES R., DUARTE H.O., GOMES C., WÄLCHLI S., REIS C.A.	CAR-TS: NEW PERSPECTIVES IN CANCER THERAPY	READ
CRUZ T.B., CARVALHO F.A., MATAFOME P.N., SOARES R.A., SANTOS N.C., TRAVASSO R.D., OLIVEIRA M.J.	MICE WITH TYPE 2 DIABETES PRESENT SIGNIFICANT ALTERATIONS IN THEIR TISSUE BIOMECHANICAL PROPERTIES AND HISTOLOGICAL FEATURES	READ
DA SILVA P.G., GONÇALVES J., LOPES A.I.B., ESTEVES N.A., BAMBA G.E.E., NASCIMENTO M.S.J., BRANCO P.T.B.S., SOARES R.R.G., SOUSA S.I.V., MESQUITA J.R.	EVIDENCE OF AIR AND SURFACE CONTAMINATION WITH SARS-COV-2 IN A MAJOR HOSPITAL IN PORTUGAL	READ
BARBOSA M.A.G., XAVIER C.P.R., PEREIRA R.F., PETRIKAITÉ V., VASCONCELOS M.H.	3D CELL CULTURE MODELS AS RECAPITULATORS OF THE TUMOR MICROENVIRONMENT FOR THE SCREENING OF ANTI-CANCER DRUGS	READ
MAIA N., NABAIS SÁ M.J., OLIVEIRA C., SANTOS F., SOARES C.A., PRIOR C., TKACHENKO N., SANTOS R., DE BROUWER A.P.M., JACOME A., PORTO B., JORGE P.	CAN THE SYNERGIC CONTRIBUTION OF MULTIGENIC VARIANTS EXPLAIN THE CLINICAL AND CELLULAR PHENOTYPES OF A NEURODEVELOPMENTAL DISORDER?	READ
RUIVO R., SOUSA J., NEUPARTH T., GEFFARD O., CHAUMOT A., CASTRO L.F.C., DEGLI-ESPOSTI D., SANTOS M.M.	FROM EXTRAPOLATION TO PRECISION CHEMICAL HAZARD ASSESSMENT: THE ECDYSONE RECEPTOR CASE STUDY	READ
ROVERI V., GUIMARÃES L.L., CORREIA A.T.	BEST MANAGEMENT PRACTICES FOR CONTROLLING THE URBAN SURFACE RUNOFF IN COASTAL ZONES: A CASE STUDY IN GUARUJÁ, STATE OF SÃO PAULO, BRAZIL	READ
MOREIRA A.C., SILVA T., MESQUITA G., GOMES A.C., BENTO C.M., NEVES J.V., RODRIGUES D.F., RODRIGUES P.N., ALMEIDA A.A., SANTAMBROGIO P., GOMES M.S.	H- FERRITIN PRODUCED BY MYELOID CELLS IS RELEASED TO THE CIRCULATION AND PLAYS A MAJOR ROLE IN LIVER IRON DISTRIBUTION DURING INFECTION	READ
WIBOWO J.T., AHMADI P., RAHMAWATI S.I., BAYU A., PUTRA M.Y., KIJJOA A.	MARINE-DERIVED INDOLE ALKALOIDS AND THEIR BIOLOGICAL AND PHARMACOLOGICAL ACTIVITIES	READ
FERNANDES M., MARQUES H., TEIXEIRA A.L., MEDEIROS R.	CERNA NETWORK OF LNCRNA/MIRNA AS CIRCULATING PROGNOSTIC BIOMARKERS IN NON-HODGKIN LYMPHOMAS: BIOINFORMATIC ANALYSIS AND ASSESSMENT OF THEIR PROGNOSTIC VALUE IN AN NHL COHORT	READ
PÁDUA D., PINTO D.F., FIGUEIRA P., PEREIRA C.F., ALMEIDA R., MESQUITA P.	HMG1 HAS PREDICTIVE VALUE IN RESPONSE TO CHEMOTHERAPY IN GASTRIC CANCER	READ
GONÇALVES A., FORTUNA A., ARIYUREK Y., OLIVEIRA M.E., NADAIS G., PINHEIRO J., DEN DUNNEN J.T., SOUSA M., OLIVEIRA J., SANTOS R.	INTEGRATING WHOLE-GENOME SEQUENCING IN CLINICAL GENETICS: A NOVEL DISRUPTIVE STRUCTURAL REARRANGEMENT IDENTIFIED IN THE DYSTROPHIN GENE (DMD)	READ
LOUREIRO J.B., RIBEIRO R., NAZARETH N., FERREIRA T., LOPES E.A., GAMA A., MACHUQUEIRO M., ALVES M.G., MARABINI L., OLIVEIRA P.A., SANTOS M.M.M., SARAIVA L.	MUTANT P53 REACTIVATOR SLMF53-2 HINDERS ULTRAVIOLET B RADIATION-INDUCED SKIN CARCINOGENESIS	READ
VIEIRA A., MOREIRA A., MACHADO J.P., ROBINSON N., HU X.-Y.	IS AURICULOTHERAPY EFFECTIVE AND SAFE FOR THE TREATMENT OF ANXIETY DISORDERS? – PROTOCOL FOR A SYSTEMATIC REVIEW	READ
GARCIA-PELAEZ J., BARBOSA-MATOS R., SÃO JOSÉ C., SOUSA S., GULLO I., HOOGERBRUGGE N., CARNEIRO F., OLIVEIRA C.	GASTRIC CANCER GENETIC PREDISPOSITION AND CLINICAL PRESENTATIONS: ESTABLISHED HERITABLE CAUSES AND POTENTIAL CANDIDATE GENES	READ
MACEDO M.H., BARROS A.S., MARTÍNEZ E., BARRIAS C.C., SARMENTO B.	ALL LAYERS MATTER: INNOVATIVE THREE-DIMENSIONAL EPITHELIUM-STROMA-ENDOTHELIUM INTESTINAL MODEL FOR RELIABLE PERMEABILITY OUTCOMES	READ
BRÁS J.P., GUILLOT DE SUDUIRAUT I., ZANOLETTI O., MONARI S., MEIJER M., GROSSE J., BARBOSA M.A., SANTOS S.G., SANDI C., ALMEIDA M.I.	STRESS-INDUCED DEPRESSIVE-LIKE BEHAVIOR IN MALE RATS IS ASSOCIATED WITH MICROGLIAL ACTIVATION AND INFLAMMATION DYSREGULATION IN THE HIPPOCAMPUS IN ADULTHOOD	READ
RAKOTONIRINA-RICQUEBOURG R., COSTA V., TEIXEIRA V.	HELLO FROM THE OTHER SIDE: MEMBRANE CONTACT OF LIPID DROPLETS WITH OTHER ORGANELLES AND SUBSEQUENT FUNCTIONAL IMPLICATIONS	READ
FONSECA D.R., MOURA A., LEIRO V., SILVA-CARVALHO R., ESTEVINHO B.N., SEABRA C.L., HENRIQUES P.C., LUCENA M., TEIXEIRA C., GOMES P., PARREIRA P., MARTINS M.C.L.	GRAFTING MSI-78A ONTO CHITOSAN MICROSPHERES ENHANCES ITS ANTIMICROBIAL ACTIVITY	READ
BRANDÃO D., PAÚL C., RIBEIRO O.	HEALTH CARE UTILIZATION IN VERY ADVANCED AGES: A STUDY ON PREDISPOSING, ENABLING AND NEED FACTORS	READ

AUTHORS	TITLE	LINK
DIAS A., MARIZ T., SOUSA A., LEMOS C., ALVES-FERREIRA M.	A REVIEW OF MIGRAINE GENETICS: GATHERING GENOMIC AND TRANSCRIPTOMIC FACTORS	READ
ALEXANDRINO D.A.M., ALMEIDA C.M.R., MUCHA A.P., CARVALHO M.F.	REVISITING PESTICIDE POLLUTION: THE CASE OF FLUORINATED PESTICIDES	READ
FERREIRA A.V., UIJEN R.F., BULUT O., DE JONGE M.I., DOMÍNGUEZ-ANDRÉS J., NETEA M.G.	LIMITED ROLE OF THE SPLEEN IN A MOUSE MODEL OF TRAINED IMMUNITY: IMPACT ON NEUTROPHILIA	READ
MESQUITA J.R., BARRAÇAS P., GOMES DA SILVA P., FERREIRA A.S., SILVA E., MATAS I.M., THOMSON G., AMORIM I., DUARTE R., GOMES H.C., MONTEIRO Á., NASCIMENTO M.S.J.	SARS-COV-2 AND BLOOD DONATIONS IN PORTUGAL, JUNE–JULY 2020	READ
FIGUEIREDO J., FERREIRA R.M., XU H., GONÇALVES M., BARROS-CARVALHO A., CRAVO J., MAIA A.F., CARNEIRO P., FIGUEIREDO C., SMITH M.L., STAMENOVIC D., MORAIS-DE-SÁ E., SERUCA R.	INTEGRIN β 1 ORCHESTRATES THE ABNORMAL CELL-MATRIX ATTACHMENT AND INVASIVE BEHAVIOUR OF E-CADHERIN DYSFUNCTIONAL CELLS	READ
PEIXOTO D., TORREBLANCA A., PEREIRA S., VIEIRA M.N., VARÓ I.	EFFECT OF SHORT-TERM EXPOSURE TO FLUORESCENT RED POLYMER MICROSPHERES ON ARTEMIA FRANCISCANA NAUPLII AND JUVENILES	READ
SILVA A.I., CAMELO A., MADUREIRA J., REIS A.T., MACHADO A.P., TEIXEIRA J.P., COSTA C.	URINARY COTININE ASSESSMENT OF MATERNAL SMOKING AND ENVIRONMENTAL TOBACCO SMOKE EXPOSURE STATUS AND ITS ASSOCIATIONS WITH PERINATAL OUTCOMES: A CROSS-SECTIONAL BIRTH STUDY	READ

U. PORTO

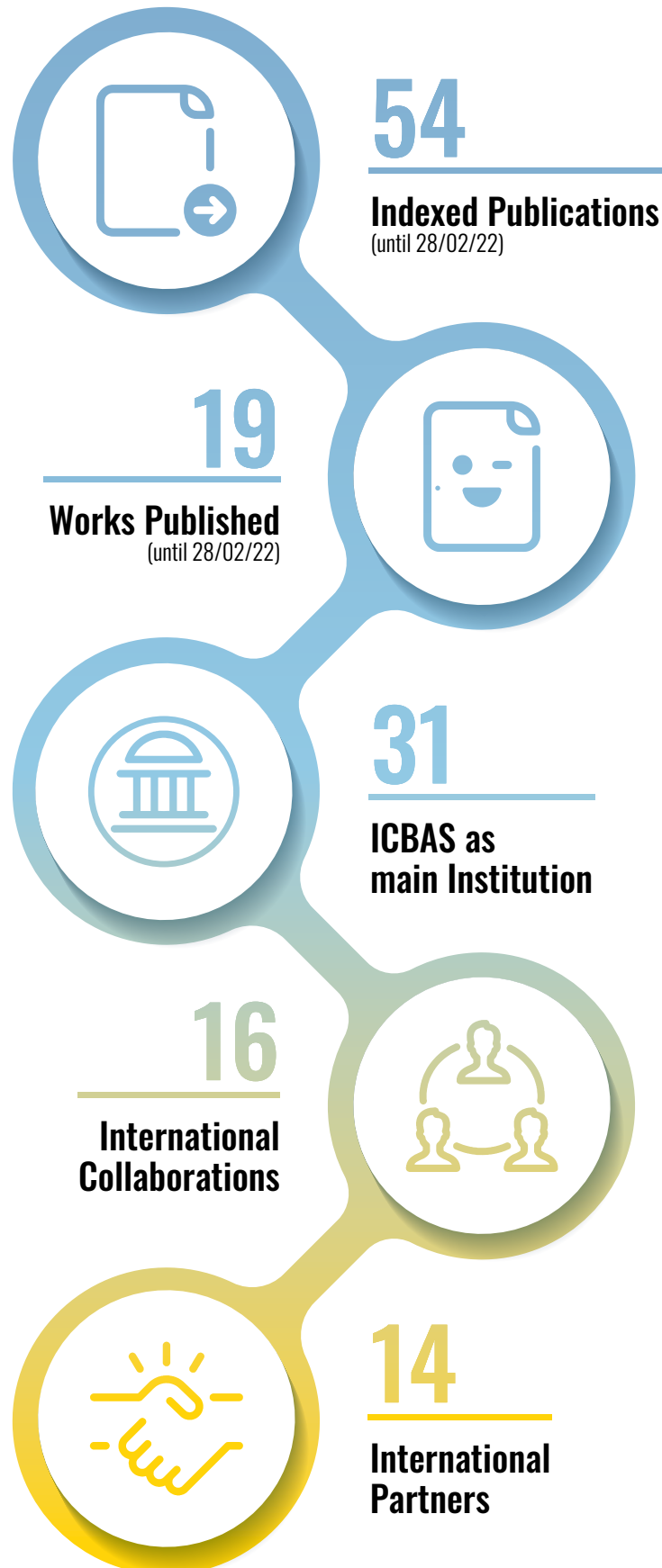


ICBAS | INSTITUTO DE CIÊNCIAS
BIOMÉDICAS ABEL SALAZAR
**SCHOOL OF MEDICINE AND
BIOMEDICAL SCIENCES**

ICBAS Publications

FEBRUARY 2022

→ (indexed until February 28, 2022)

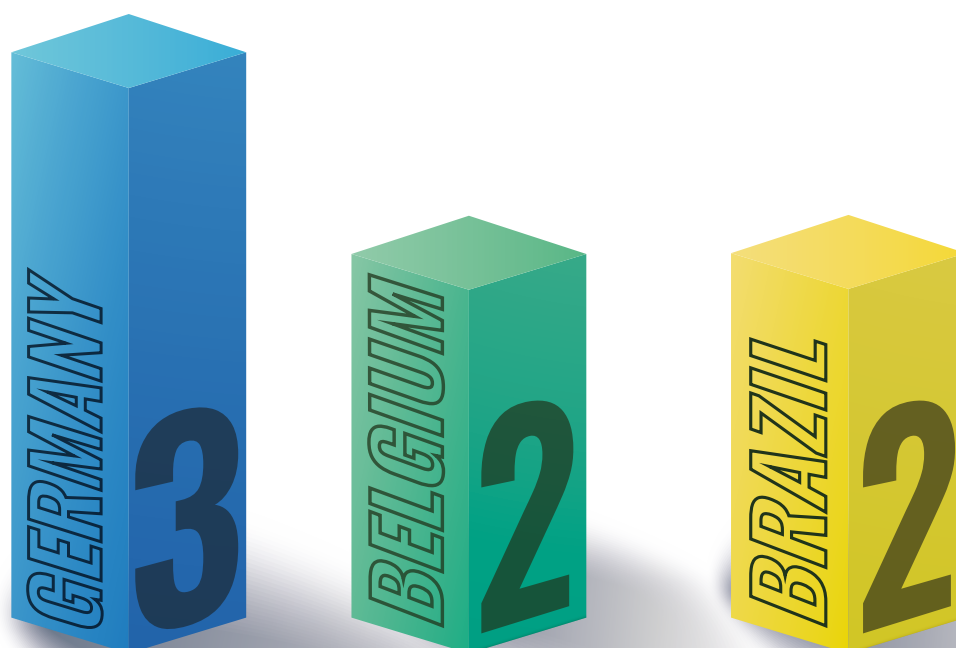


Top 3 International Partners

ICBAS Publications

FEBRUARY 2022

→ (indexed until February 28, 2022)



AUTHORS	TITLE	LINK
PEREIRA D.R., SILVA E.R., CARVALHO-MAIA C., MONTEIRO-REIS S., LOURENÇO C., CALJSTO R., TEIXEIRA R.J., CARLSON L.E., BART G., VAINIO S.J., SALES M.G.F., JERÓNIMO C., HENRIQUE R.	THE MODULATORY ROLE OF INTERNET-SUPPORTED MINDFULNESS-BASED COGNITIVE THERAPY ON EXTRACELLULAR VESICLES AND PSYCHOLOGICAL DISTRESS IN PEOPLE WHO HAVE HAD CANCER: A PROTOCOL FOR A TWO-ARMED RANDOMIZED CONTROLLED STUDY	READ
SILVA A.L.R., OLIVEIRA P.C.F.C., GONÇALVES J.M., MORAIS V.M.F., RIBEIRO DA SILVA M.D.M.C.	METAL-LIGAND BINDING ENERGIES IN COPPER (II) AND NICKEL (II) COMPLEXES WITH TETRADENTATE N2O2 SCHIFF BASE LIGANDS	READ
CARDOSO S.D., FARACO C.B., DE SOUSA L., PEREIRA G.D.G.	EMPATHY WITH HUMANS AND WITH NON-HUMAN ANIMALS: ARE THERE DIFFERENCES BETWEEN INDIVIDUALS WHO HAVE ADOPTED AND THOSE WHO HAVE RELINQUISHED A PET?	READ
AGUIAR A., PINTO M., DUARTE R.	THE BAD, THE UGLY AND THE MONSTER BEHIND THE MIRROR - FOOD INSECURITY, MENTAL HEALTH AND SOCIO-ECONOMIC DETERMINANTS	READ
SILVA H.-H., SILVA M.-R.G., CERQUEIRA F., TAVARES V., MEDEIROS R.	GENOMIC PROFILE IN ASSOCIATION WITH SPORT-TYPE, SEX, ETHNICITY, PSYCHOLOGICAL TRAITS AND SPORT INJURIES OF ELITE ATHLETES	READ
SOUSA S., SÁ PINTO V., CHAVES J., MARTINS DA SILVA A., RAMALHEIRA J., LOPES J., TEMUDO T., LOPES LIMA J.M., CALHEIROS A., RANGEL R.	LONG TERM OUTCOME OF FUNCTIONAL HEMISPHERECTOMY FOR REFRACTORY EPILEPSY: EXPERIENCE FROM A SINGLE CENTER [RESULTADO A LARGO PLAZO DE LA HEMISPHERECTOMÍA FUNCIONAL PARA LA EPILEPSIA REFRACTARIA: EXPERIENCIA EN UN ÚNICO CENTRO]	READ
LONG S., DUARTE D., CARVALHO C., OLIVEIRA R., SANTARÉM N., PALMEIRA A., RESENDE D.J.S.P., SILVA A.M.S., MOREIRA R., KIJJOA A., CORDEIRO DA SILVA A., NOGUEIRA F., SOUSA E., PINTO M.M.M.	INDOLE-CONTAINING PYRAZINO[2,1- B]QUINAZOLINE-3,6-DIONES ACTIVE AGAINST PLASMODIUM AND TRYPANOSOMATIDS	READ
LIMA T., FERREIRA R., FREITAS M., HENRIQUE R., VITORINO R., FARDILHA M.	INTEGRATION OF AUTOMATIC TEXT MINING AND GENOMIC AND PROTEOMIC ANALYSIS TO UNRAVEL PROSTATE CANCER BIOMARKERS	READ
SILVA P., LATRUFFE N.	BENEFITS OF THE MEDITERRANEAN DIET-WINE ASSOCIATION: THE ROLE OF INGREDIENTS	READ
BISCAIA S., BRANQUINHO M.V., ALVITES R.D., FONSECA R., SOUSA A.C., PEDROSA S.S., CASEIRO A.R., GUEDES F., PATRÍCIO T., VIANA T., MATEUS A., MAURÍCIO A.C., ALVES N.	3D PRINTED POLY(E-CAPROLACTONE)/HYDROXYAPATITE SCAFFOLDS FOR BONE TISSUE ENGINEERING: A COMPARATIVE STUDY ON A COMPOSITE PREPARATION BY MELT BLENDING OR SOLVENT CASTING TECHNIQUES AND THE INFLUENCE OF BIO-CERAMIC CONTENT ON SCAFFOLD PROPERTIES	READ
PEREIRA H., SOUSA M.C., VIEIRA L.R., MORGADO F., DIAS J.M.	MODELLING SALT INTRUSION AND ESTUARINE PLUMES UNDER CLIMATE CHANGE SCENARIOS IN TWO TRANSITIONAL ECOSYSTEMS FROM THE NW ATLANTIC COAST	READ
LOURENÇO B.C., GUIMARÃES-TEIXEIRA C., FLORES B.C.T., MIRANDA-GONÇALVES V., GUIMARÃES R., CANTANTE M., LOPES P., BRAGA I., MAURÍCIO J., JERÓNIMO C., HENRIQUE R., LOBO J.	KI67 AND LSD1 EXPRESSION IN TESTICULAR GERM CELL TUMORS IS NOT ASSOCIATED WITH PATIENT OUTCOME: INVESTIGATION USING A DIGITAL PATHOLOGY ALGORITHM	READ
ALVITES R., BRANQUINHO M., SOUSA A.C., LOPES B., SOUSA P., MAURÍCIO A.C.	MESENCHYMAL STEM/STROMAL CELLS AND THEIR PARACRINE ACTIVITY—IMMUNOMODULATION MECHANISMS AND HOW TO INFLUENCE THE THERAPEUTIC POTENTIAL	READ
GHORAN S.H., TAKTAZ F., MOZAFARI A.A., TUNÇTÜRK M., SEKEROGLU N., KIJJOA A.	UNCOMMON TERPENOIDS FROM SALVIA SPECIES: CHEMISTRY, BIOSYNTHESIS AND BIOLOGICAL ACTIVITIES	READ
PINELLO K., PIRES I., CASTRO A.F., CARVALHO P.T., SANTOS A., DE MATOS A., QUEIROGA F., NIZA-RIBEIRO J.	VET-ONCONET: DEVELOPING A NETWORK OF VETERINARY ONCOLOGY AND REPORTING A PIONEERING PORTUGUESE EXPERIENCE	READ
MOREIRA A.S., SANTOS-SILVA S., MEGA J., PALMEIRA J.D., TORRES R.T., MESQUITA J.R.	EPIDEMIOLOGY OF PORCINE CIRCOVIRUS TYPE 2 CIRCULATING IN WILD BOARS OF PORTUGAL DURING THE 2018–2020 HUNTING SEASONS SUGGESTS THE EMERGENCE OF GENOTYPE 2D	READ
DINIZ F., COELHO P., DUARTE H.O., SARMENTO B., REIS C.A., GOMES J.	GLYCANS AS TARGETS FOR DRUG DELIVERY IN CANCER	READ
BRAGA P.C., ALVES M.G., RODRIGUES A.S., OLIVEIRA P.F.	MITOCHONDRIAL PATHOPHYSIOLOGY ON CHRONIC KIDNEY DISEASE	READ
GIÃO T., TEIXEIRA T., ALMEIDA M.R., CARDOSO I.	CHOROID PLEXUS IN ALZHEIMER'S DISEASE—THE CURRENT STATE OF KNOWLEDGE	READ
SEQUEIRA J.P., CONSTÂNCIO V., SALTA S., LOBO J., BARROS-SILVA D., CARVALHO-MAIA C., RODRIGUES J., BRAGA I., HENRIQUE R., JERÓNIMO C.	LIKIDMIRS: A DDPCR-BASED PANEL OF 4 CIRCULATING MIRNAS FOR DETECTION OF RENAL CELL CARCINOMA	READ
MATOS R., TAILLIEU E., DE BRUYCKERE S., DE WITTE C., RÊMA A., SANTOS-SOUSA H., NOGUEIRO J., REIS C.A., CARNEIRO F., HAESBROUCK F., AMORIM I., GÄRTNER F.	PRESENCE OF HELICOBACTER SPECIES IN GASTRIC MUCOSA OF HUMAN PATIENTS AND OUTCOME OF HELICOBACTER ERADICATION TREATMENT	READ
PIRES-GONÇALVES L., ABREU M.H., AGUIAR A.T., GUIMARÃES DOS SANTOS A., FERRÃO A., HENRIQUE R.	SIZE REDUCTION AND DECREASED ENHANCEMENT OF BENIGN BREAST FIBROADENOMA ON CONTRAST-ENHANCED MAMMOGRAPHY DURING NEOADJUVANT CHEMOTHERAPY	READ
RIBEIRO J.C., CARRAGETA D.F., BERNARDINO R.L., ALVES M.G., OLIVEIRA P.F.	AQUAPORINS AND ANIMAL GAMETE CRYOPRESERVATION: ADVANCES AND FUTURE CHALLENGES	READ
CRUZ M.S., LOUREIRO J.P., OLIVEIRA M.J., MACEDO M.F.	THE INKT CELL-MACROPHAGE AXIS IN HOMEOSTASIS AND DISEASE	READ
PEREIRA F., FERREIRA A., REIS C.A., SOUSA M.J., OLIVEIRA M.J., PRETO A.	KRAS AS A MODULATOR OF THE INFLAMMATORY TUMOR MICROENVIRONMENT: THERAPEUTIC IMPLICATIONS	READ

AUTHORS	TITLE	LINK
VOJTEK M., GONÇALVES-MONTEIRO S., ŠEMINSKÁ P., VALOVÁ K., BELLÓN L., DIAS-PEREIRA P., MARQUES F., MARQUES M.P.M., BÁTISTA DE CARVALHO A.L.M., MOTA-FILUPE H., FERREIRA I.M.PL.V.O., DINIZ C.	PD2SPERMINE COMPLEX SHOWS CANCER SELECTIVITY AND EFFICACY TO INHIBIT GROWTH OF TRIPLE-NEGATIVE BREAST TUMORS IN MICE	READ
SANTOS P., PEIXOTO D., FERREIRA I., PASSOS R., PIRES P., SIMÕES M., POUSÃO-FERREIRA P., BAPTISTA T., COSTAS B.	SHORT-TERM IMMUNE RESPONSES OF GILTHEAD SEABREAM (SPARUS AURATA) JUVENILES AGAINST PHOTOBACTERIUM DAMSELAE SUBSP. PISCICIDA	READ
LOBO-DA-CUNHA A., ALVES Â., OLIVEIRA E., CALADO G.	FUNCTIONAL HISTOLOGY AND ULTRASTRUCTURE OF THE DIGESTIVE TRACT IN TWO SPECIES OF CHITONS (MOLLUSCA, POLYPLACOPHORA)	READ
SALAS-LEITON E., COSTA A., NEVES V., SOARES J., BORDALO A., COSTA-DIAS S.	SUSTAINABILITY OF THE PORTUGUESE NORTH-WESTERN FISHING ACTIVITY IN THE FACE OF THE RECENTLY IMPLEMENTED MARITIME SPATIAL PLANNING	READ
OLIVEIRA F., LIMA T., CORREIA A., SILVA A.M., SOARES C., MORAIS S., WEIBELBERG S., VILANOVA M., ROHDE H., CERCA N.	INVOLVEMENT OF THE IRON-REGULATED LOCI HTS AND FHUC IN BIOFILM FORMATION AND SURVIVAL OF STAPHYLOCOCCUS EPIDERMIDIS WITHIN THE HOST	READ
MATOS R., SOUSA H.S., NOGUEIRO J., MAGALHÃES A., REIS C.A., CARNEIRO F., AMORIM I., HAESEBROUCK F., GARTNER F.	HELICOBACTER SPECIES BINDING TO THE HUMAN GASTRIC MUCOSA	READ
MACHADO M., MACHADO R., ALMEIDA R.	RENAL AUTOTRANSPLANTATION FOR THE TREATMENT OF RENAL ARTERY ANEURYSM	READ
FERREIRA C., TRINDADE F., FERREIRA R., NEVES J.S., LEITE-MOREIRA A., AMADO F., SANTOS M., NOGUEIRA-FERREIRA R.	SEXUAL DIMORPHISM IN CARDIAC REMODELING: THE MOLECULAR MECHANISMS RULED BY SEX HORMONES IN THE HEART	READ
FERREIRA M., RIBEIRO P.C., RIBEIRO L., BARATA M., DOMINGUES V.F., SOUSA S., SOARES C., MARQUES A., POUSÃO-FERREIRA P., DIAS J., CASTRO L.F.C., MARQUES A., NUNES M.L., VALENTE L.M.P.	BIOFORTIFIED DIETS CONTAINING ALGAE AND SELENISED YEAST: EFFECTS ON GROWTH PERFORMANCE, NUTRIENT UTILIZATION, AND TISSUE COMPOSITION OF GILTHEAD SEABREAM (SPARUS AURATA)	READ
BARRETO J.V., DIAS C.C., CARDOSO T.	RISK FACTORS FOR COMMUNITY-ONSET PNEUMONIA CAUSED BY DRUG-RESISTANT PATHOGENS: A PROSPECTIVE COHORT STUDY	READ
MARRINHAS C., OLIVEIRA L.F., SAMPAIO F., MOREIRA R., CANADAS-SOUSA A., PEREIRA A., SANTOS M., MARCOS R.	NEEDLE RINSE CELL BLOCKS AS AN ANCILLARY TECHNIQUE: DIAGNOSTIC AND CLINICAL UTILITY IN GASTROINTESTINAL NEOPLASIA	READ
MARTINHO R., SEIXAS R., AZEVEDO M., OLIVEIRA A., SERRÃO P., MOREIRA-RODRIGUES M.	SOTALOL TREATMENT MAY INTERFERE WITH RETRIEVAL, EXPRESSION, AND/OR RECONSOLIDATION PROCESSES THUS DISRUPTING TRAUMATIC MEMORIES IN A POST-TRAUMATIC STRESS DISORDER MICE MODEL	READ
DUARTE T.L., NEVES J.V.	MEASUREMENT OF TISSUE NON-HEME IRON CONTENT USING A BATHOPHENANTHROLINE-BASED COLORIMETRIC ASSAY	READ
BARBOSA J., SUNKEL C.E., CONDE C.	THE ROLE OF MITOTIC KINASES AND THE RZZ COMPLEX IN KINETOCHORE-MICROTUBULE ATTACHMENTS: DOING THE RIGHT LINK	READ
GONÇALVES R.M., SAGGESE T., YONG Z., FERREIRA J.R., IGNATIUS A., WILKE H.-J., NEIDLINGER-WILKE C., TEIXEIRA G.Q.	INTERLEUKIN-1 β MORE THAN MECHANICAL LOADING INDUCES A DEGENERATIVE PHENOTYPE IN HUMAN ANNULUS FIBROSUS CELLS, PARTIALLY IMPAIRED BY ANTI-PROTEOLYTIC ACTIVITY OF MESENCHYMAL STEM CELL SECRETOME	READ
BRAVO J., RIBEIRO I., TERCEIRO A.F., ANDRADE E.B., PORTUGAL C.C., LOPES I.M., AZEVEDO M.M., SOUSA M., LOPES C.D.F., LOBO A.C., CANEDO T., RELVAS J.B., SUMMAVIELLE T.	NEURON-MICROGLIA CONTACT-DEPENDENT MECHANISMS ATTENUATE METHAMPHETAMINE-INDUCED MICROGLIA REACTIVITY AND ENHANCE NEURONAL PLASTICITY	READ
FERREIRA M., RIBEIRO P.C., RIBEIRO L., BARATA M., DOMINGUES V.F., SOUSA S., SOARES C., MARQUES A., POUSÃO-FERREIRA P., DIAS J., CASTRO L.F.C., MARQUES A., NUNES M.L., VALENTE L.M.P.	BIOFORTIFIED DIETS CONTAINING ALGAE AND SELENISED YEAST: EFFECTS ON GROWTH PERFORMANCE, NUTRIENT UTILIZATION, AND TISSUE COMPOSITION OF GILTHEAD SEABREAM (SPARUS AURATA)	READ
BARNES D.R., SILVESTRI V., LESLIE G., MCGUFFOG L., DENNIS J., YANG X., ADLARD J., AGNARSSON B.A., AHMED M., AITTO MÄKI K., ANDRULIS I.L., ARASON A., ARNOLD N., AUBER B., AZZOLLINI J., BALMAÑA J., BARKARDOTTIR R.B., BARROWDALE D., BARWELL J., BELOTTI M., BENITEZ J., BERTHET P., BOONEN S.E., BORG Å., BOZSIK A., BRADY A.F., BRENNAN P., BREWER C., BRUNET J., BUCALO A., BUYS S.S., CALDÉS T., CALIGO M.A., CAMPBELL I., CASSINGHAM H., CHRISTENSEN L.L., CINI G., CLAES K.B.M., COOK J., COPPA A., CORTESI L., DAMANTE G., DARDER E., DAVIDSON R., DE LA HOYA M., DE LEENEER K., DE PUTTER R., DEL VALLE J., DIEZ O., DING Y.C., DOMCHEK S.M., DONALDSON A., EASON J., EELES R., ENGEL C., EVANS D.G., FELIUBADALÓ L., FOSTIRA F., FRONE M., FROST D., GALLAGHER D., GEHRIG A., GIRAUD S., GLENDON G., GODWIN A.K., GOLDFAR D.E., GREENE M.H., GREGORY H., GROSS E., HAHNEN E., HAMANN U., HANSEN T.V.O., HANSON H., HENTSCHER J., HORVATH J., IZATT L., IZQUIERDO A., JAMES P.A., JANAVICIUS R., JENSEN U.B., JOHANSSON O.T., JOHN E.M., KRAMER G., KROELDRUP L., KRUSE T.A., LAUTRUP C., LAZARO C., LESJUEUR F., LOPEZ-FERNÁNDEZ A., MAI P.L., MANOUKIAN S., MATRAI Z., MATRICARDI L., MAXWELL K.N., MEBIROUK N., MEINDL A., MONTAGNA M., MONTEIRO A.N., MORRISON P.J., MURANEN T.A., MURRAY A., NATHANSON K.L., NEUHAUSEN S.L., NEVANLINNA H., NGUYEN-DUMONT T., NIEDERACHER D., OLAH E., OLOPADE O.I., PALLI D., PARSONS M.T., PEDERSEN I.S., PEISSEL B., PEREZ-SEGURA P., PETERLONGO P., PETERSEN A.H., PINTO P., PORTEOUS M.E., POTTINGER C., PUJANA M.A., RADICE P., RAMSER J., RANTALA J., ROBSON M., ROGERS M.T., RÖNLUND K., RUMP A., SÁNCHEZ DE ABAJO A.M., SHAH P.D., SHARIF S., SIDE L.E.,	BREAST AND PROSTATE CANCER RISKS FOR MALE BRCA1 AND BRCA2 PATHOGENIC VARIANT CARRIERS USING POLYGENIC RISK SCORES	READ

AUTHORS	TITLE	LINK
SINGER C.F., STADLER Z., STEELE L., STOPPA-LYONNET D., SUTTER C., TAN Y.Y., TEIXEIRA M.R., TEULÉ A., THULL D.L., TISCHKOWITZ M., TOLAND A.E., TOMMASI S., TOSS A., TRAINER A.H., TRIPATHI V., VALENTINI V., VAN ASPEREN C.J., VENTURELLI M., VIEL A., VIJAI J., WALKER L., WANG-GOHRKE S., WAPPENSCHMIDT B., WHAITE A., ZANNA I., OFFIT K., THOMASSEN M., COUCH F.J., SCHMUTZLER R.K., SIMARD J., EASTON D.F., CHENEVIX-TRENCH G., ANTONIOU A.C., OTTINI L., GEMO STUDY COLLABORATORS, EMBRACE COLLABORATORS, KCONFAB INVESTIGATORS, HEBON INVESTIGATORS, CONSORTIUM OF INVESTIGATORS OF MODIFIERS OF BRCA1 AND BRCA2		
MOREIRA M.V., PEREIRA S.C., GUERRA-CARVALHO B., CARRAGETA D.F., PINTO S., BARROS A., SILVA B.M., OLIVEIRA P.F., ALVES M.G.	HYPEROSIDE SUPPLEMENTATION IN PRESERVATION MEDIA SURPASSES VITAMIN C PROTECTION AGAINST OXIDATIVE STRESS-INDUCED DAMAGES IN HUMAN SPERMATOZOA	READ
COSTA J.P.D., MEIRELES P., RODRIGUES P.N.S., BARROS H.	INCIDENCE OF SARS-COV-2 INFECTION IN A COHORT OF WORKERS FROM THE UNIVERSITY OF PORTO, PORTUGAL	READ
MOREIRA F., ARENAS M., VIDEIRA A., PEREIRA F.	EVOLUTIONARY HISTORY OF TOPIIA TOPOISOMERASES IN ANIMALS	READ
CONCEIÇÃO F., SOUSA D.M., LOESSBERG-ZAHL J., VOLLERTSEN A.R., NETO E., SOE K., PAREDES J., LEFERINK A., LAMGHARI M.	A METASTASIS-ON-A-CHIP APPROACH TO EXPLORE THE SYMPATHETIC MODULATION OF BREAST CANCER BONE METASTASIS	READ
ALMEIDA E., HENRIQUES V., WIEGAND S., ALBUQUERQUE L., SCHUMANN P., KOHN T., JOGLER C., DA COSTA M.S., LOBO-DA-CUNHA A., CARVALHO M.F., LAGE O.M.	SALSIPALUDIBACTER ALBUS GEN. NOV., SP. NOV., A NOVEL ACTINOBACTERIAL STRAIN ISOLATE FROM A PORTUGUESE SOLAR SALTERN AND PROPOSAL OF SALSIPALUDIBACTERACEAE FAM. NOV. AND SALSIPALUDIBACTERALES ORD. NOV.	READ
SCHROEDER R., CORREIA A.T., MEDEIROS S.D., PESSATTI M.L., SCHWINGEL P.R.	SPATIOTEMPORAL VARIABILITY OF THE CATCH COMPOSITION AND DISCARDS ESTIMATES OF THE DIFFERENT METHODS OF ONBOARD PRESERVATION FOR THE BRAZILIAN SARDINE FISHERY IN THE SOUTHWEST ATLANTIC OCEAN	READ
LUÍS T., CANDEIAS C., DOMINGUES S., OLIVA-TELES N., MOTA C., REIS C.F.	PARTIAL TETRASOMY 18 MOSAICISM: PRE AND POSTNATAL DIAGNOSIS OF A UNIQUE PATTERN	READ
AZEVEDO C., CASAL G., SOARES E.C., OLIVEIRA E., ROCHA S., HINE M., SILVA T.J.	HEMAGGLUTINATION IN GILL CAPILLARIES OF SHEEPSHEAD, ARCHOSARGUS PROBATOCEPHALUS (PERCIFORMES: SPARIDAE), INFECTED BY A MYXOSPORIDEAN	READ
PEIXOTO P.S., CARVALHO P.H., MACHADO A., BARREIROS L., BORDALO A.A., OLIVEIRA H.P., SEGUNDO M.A.	DEVELOPMENT OF A SCREENING METHOD FOR SULFAMETHOXAZOLE IN ENVIRONMENTAL WATER BY DIGITAL COLORIMETRY USING A MOBILE DEVICE	READ
MARTINS-LIMA C., MIRANDA-GONÇALVES V., LOBO J., CONSTÂNCIO V., LEITE-SILVA P., GUIMARÃES-TEIXEIRA C., MONTEIRO-REIS S., SEQUEIRA J.P., CANTANTE M., GONÇALVES C.S., COSTA B.M., HENRIQUE R., JERÓNIMO C.	CADHERIN SWITCHES DURING EPITHELIAL-MESENCHYMAL TRANSITION: CDH4/RCAD DOWNREGULATION REDUCES BLADDER CANCER PROGRESSION	READ
VIEIRA S., SANTOS M., MAGALHÃES R., OLIVEIRA M., COSTA R., BROCHADO B., SANTOS R.B., SILVEIRA J., TORRES S., LUZ A.	ATMOSPHERIC FEATURES AND RISK OF ST-ELEVATION MYOCARDIAL INFARCTION IN PORTO (PORTUGAL): A TEMPERATE MEDITERRANEAN (CSB) CITY [CARACTERÍSTICAS ATMOSFÉRICAS E RISCO DE ENFARTE COM ELEVÇÃO DE ST NO PORTO (PORTUGAL) – UMA CIDADE COM CLIMA MEDITERRÂNEO TEMPERAÇO (CSB)]	READ