

**U.** PORTO



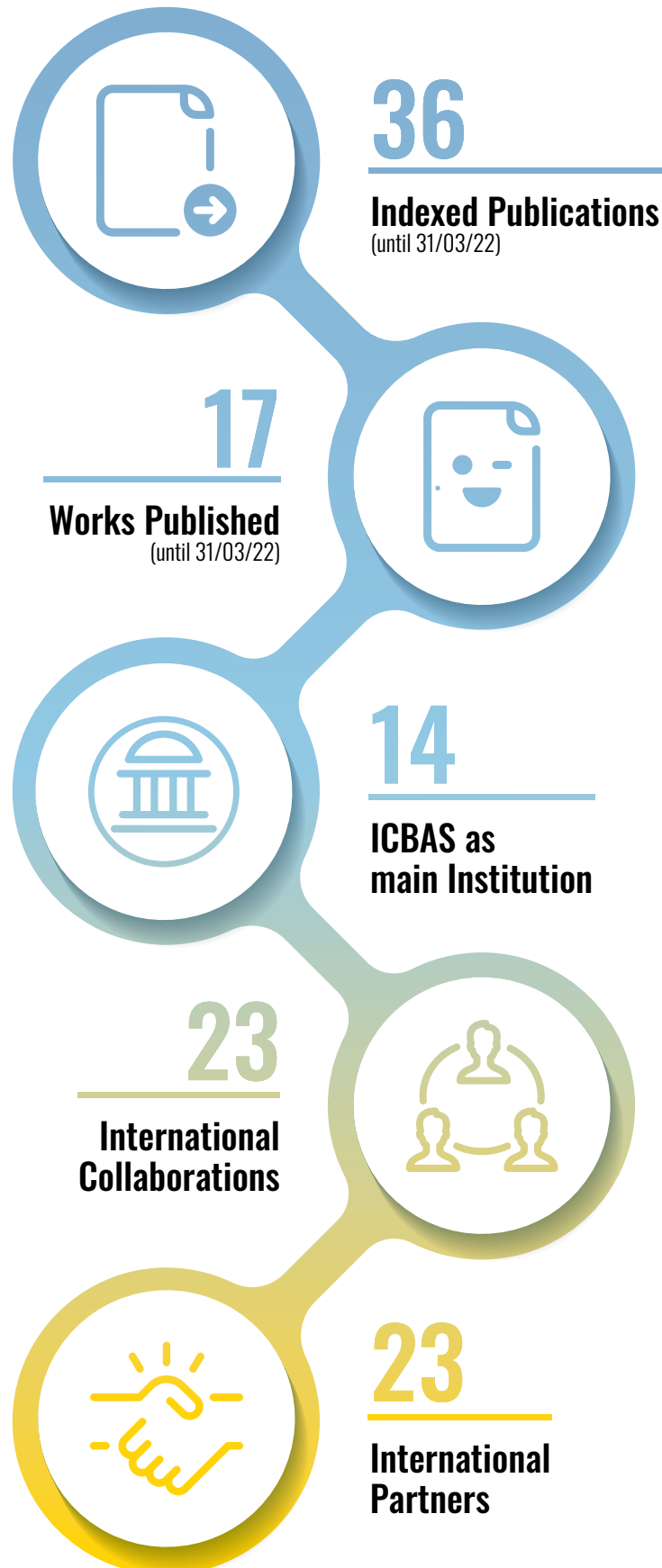
**ICBAS** | INSTITUTO DE CIÊNCIAS  
BIOMÉDICAS ABEL SALAZAR  
**SCHOOL OF MEDICINE AND  
BIOMEDICAL SCIENCES**

# ICBAS Publications

MARCH 2022

→ (indexed until March 31, 2022)



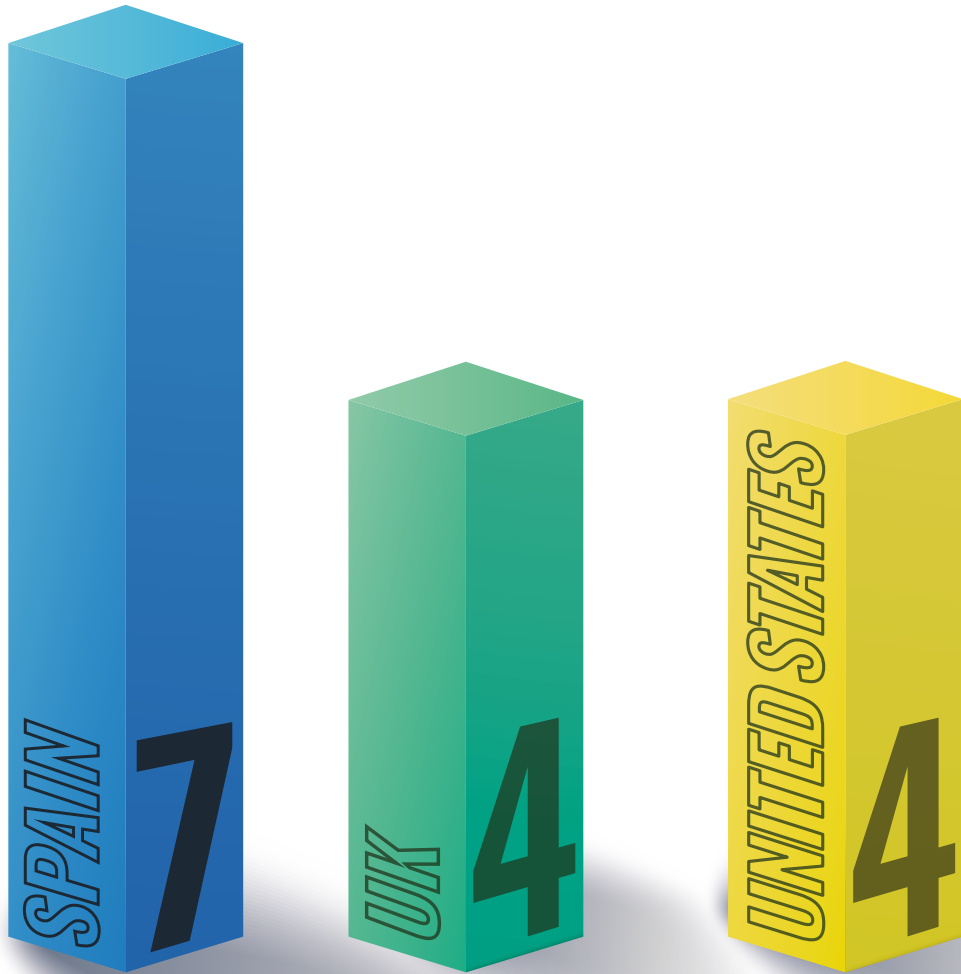


# Top 3 International Partners

ICBAS Publications

MARCH 2022

→ (indexed until Mar 31, 2022)





AUTHORS	TITLE	LINK
GUEDES F., BRANQUINHO M.V., SOUSA A.C., ALVITES R.D., BUGALHO A., MAURICIO A.C.	CENTRAL AIRWAY OBSTRUCTION: IS IT TIME TO MOVE FORWARD?	<a href="#">READ</a>
CRUZ D., MONTEIRO F., PAÇO M., VAZ-SILVA M., LEMOS C., ALVES-FERREIRA M., PINHO T.	GENETIC OVERLAP BETWEEN TEMPOROMANDIBULAR DISORDERS AND PRIMARY HEADACHES: A SYSTEMATIC REVIEW	<a href="#">READ</a>
LIMA S., MATINHA-CARDOSO J., GINER-LAMIA J., COUTO N., PACHECO C.C., FLORENCIO F.J., WRIGHT P.C., TAMAGNINI P., OLIVEIRA P.	EXTRACELLULAR VESICLES AS AN ALTERNATIVE COPPER-SECRETION MECHANISM IN BACTERIA	<a href="#">READ</a>
LÓPEZ-DE-CAMPOS D., LEAL SEABRA C., PINTO R.M., ADAM SŁOWIŃSKI M., SARMENTO B., NUNES C., CRISTINA L. MARTINS M., REIS S.	TARGETING AND KILLING THE EVER-CHALLENGING ULCER BUG	<a href="#">READ</a>
CARVALHO E.D., MORAIS M.R.G., FERREIRA H.P., SILVA M.M.C., GUIMARAES S.C., PÉGO A.P.	REVIEW A PARADIGM SHIFT: BIOENGINEERING MEETS MECHANOBIOLOGY TOWARDS OVERCOMING REMYELINATION FAILURE	<a href="#">READ</a>
MOLINA-RUIZ R.M., GOMEZ-SÁNCHEZ-LAFUENTE C., PEREIRA-SANCHEZ V., PINTO DA COSTA M.	MIGRATION OF MEDICAL PROFESSIONALS: THE CASE OF PSYCHIATRIC TRAINEES IN SPAIN	<a href="#">READ</a>
LIMA A.R., CARVALHO M., AVEIRO S.S., MELO T., DOMINGUES M.R., MACEDO-SILVA C., COIMBRA N., JERÓNIMO C., HENRIQUE R., BASTOS M.D.L., GUEDES DE PINHO P., PINTO J.	COMPREHENSIVE METABOLOMICS AND LIPIDOMICS PROFILING OF PROSTATE CANCER TISSUE REVEALS METABOLIC DYSREGULATIONS ASSOCIATED WITH DISEASE DEVELOPMENT	<a href="#">READ</a>
MAGALHÃES A.C., RICARDO S., MOREIRA A.C., NUNES M., TAVARES M., PINTO R.J., GOMES M.S., PEREIRA L.	INFECTIONCMA: A CELL MICROARRAY APPROACH FOR EFFICIENT BIOMARKER SCREENING IN IN VITRO INFECTION ASSAYS	<a href="#">READ</a>
PEREIRA M.A., SANTOS R., NÓBREGA C., MEGA C., CRUZ R., ESTEVES F., SANTOS C., COELHO C., MESQUITA J.R., VALA H., SANTOS-GOMES G.	A QUESTIONNAIRE-BASED SURVEY ON THE LONG-TERM MANAGEMENT OF CANINE LEISHMANIOSIS BY VETERINARY PRACTITIONERS	<a href="#">READ</a>
AGBARYA A., SHALATA W., ADDEO A., CHARPIDOU A., CUPPENS K., BRUSTUGUN O.T., RAJER M., JAKOPOVIC M., MARINCA M.V., PLUZANSKI A., HILTERMANN J., ARAÚJO A.	REAL-WORLD JOURNEY OF UNRESECTABLE STAGE III NSCLC PATIENTS: CURRENT DILEMMAS FOR DISEASE STAGING AND TREATMENT	<a href="#">READ</a>
PINELLO K., BALDASSARRE V., STEIGER K., PACIELLO O., PIRES I., LAUFER-AMORIM R., DEVERMANN A., NIZA-RIBEIRO J., ARESU L., ROUS B., ZNAOR A., CREE I.A., GUSCETTI F., PALMIERI C., DAGLI M.L.Z.	VET-ICD-0-CANINE-1, A SYSTEM FOR CODING CANINE NEOPLASMS BASED ON THE HUMAN ICD-0-3.2	<a href="#">READ</a>
MENDES S., SÁ R., MAGALHÃES M., MARQUES F., SOUSA M., SILVA E.	THE ROLE OF ROS AS A DOUBLE-EDGED SWORD IN (IN)FERTILITY: THE IMPACT OF CANCER TREATMENT	<a href="#">READ</a>
SANTOS M., DAMÁSIO J., CARMONA S., NETO J.L., DEHGHANI N., GUEDES L.C., BARBOT C., BARROS J., BRÁS J., SEQUEIROS J., GUERREIRO R.	MOLECULAR CHARACTERIZATION OF PORTUGUESE PATIENTS WITH HEREDITARY CEREBELLAR ATAXIA	<a href="#">READ</a>
MENESES J., VAN DE KEMP T., COSTA-ALMEIDA R., PEREIRA R., MAGALHÃES F.D., CASTILHO M., PINTO A.M.	FABRICATION OF POLYMER/GRAPHENE BIOCOMPOSITES FOR TISSUE ENGINEERING	<a href="#">READ</a>
SOUSA A.C.A., ALVES M.G., OLIVEIRA P.F., SILVA B.M., RATO L.	MALE INFERTILITY IN THE XXI CENTURY: ARE OBESOGENS TO BLAME?	<a href="#">READ</a>
FAJARDO C., SANTOS P., PASSOS R., VAZ M., AZEREDO R., MACHADO M., FERNÁNDEZ-BOO S., BAPTISTA T., COSTAS B.	FUNCTIONAL AND MOLECULAR IMMUNE RESPONSE OF RAINBOW TROUT (ONCORHYNCHUS MYKISS) FOLLOWING CHALLENGE WITH YERSINIA RUCKERI	<a href="#">READ</a>
MOREIRA S., CRIADO M.B., FERREIRA M.S., MACHADO J., GONÇALVES C., CLEMENTE F.M., MESQUITA C., LOPES S., SANTOS P.C.	POSITIVE EFFECTS OF AN ONLINE WORKPLACE EXERCISE INTERVENTION DURING THE COVID-19 PANDEMIC ON QUALITY OF LIFE PERCEPTION IN COMPUTER WORKERS: A QUASI-EXPERIMENTAL STUDY DESIGN	<a href="#">READ</a>
RODRIGUES B., GONÇALVES A., SOUSA V., MAIA N., MARQUES I., VALE-FERNANDES E., SANTOS R., NOGUEIRA A.J.A., JORGE P.	USE OF THE FMR1 GENE METHYLATION STATUS TO ASSESS THE X-CHROMOSOME INACTIVATION PATTERN: A STEPWISE ANALYSIS	<a href="#">READ</a>
PEREIRA-CASTRO I., GARCIA B.C., CURINHA A., NEVES-COSTA A., CONDE-SOUSA E., MOITA L.F., MOREIRA A.	MCL1 ALTERNATIVE POLYADENYLATION IS ESSENTIAL FOR CELL SURVIVAL AND MITOCHONDRIA MORPHOLOGY	<a href="#">READ</a>
WALSH C.M., LIGHTDALE J.R., FISHMAN D.S., FURLANO R.J., MAMULA P., GILLET P.M., NARULA P., HOJSAK I., OLIVA S., HOMAN M., RILEY M.R., HUYNH H.Q., ROSH J.R., JACOBSON K., TAVARES M., LEIBOWITZ I.H., UTTERSON E.C., CROFT N.M., MACK D.R., BRILL H., LIU Q.Y., BONTEMS P., LERNER D.G., AMIL-DIAS J., KRAMER R.E., OTLEY A.R., AMBARTSUMYAN L., CONNAN V., MCCREATH G.A., THOMSON M.A.	PEDIATRIC ENDOSCOPY QUALITY IMPROVEMENT NETWORK PEDIATRIC ENDOSCOPY REPORTING ELEMENTS: A JOINT NASPGHAN/ESPGHAN GUIDELINE	<a href="#">READ</a>
WALSH C.M., LIGHTDALE J.R., LEIBOWITZ I.H., LERNER D.G., LIU Q.Y., MACK D.R., MAMULA P., NARULA P., OLIVA S., RILEY M.R., ROSH J.R., TAVARES M., UTTERSON E.C., AMIL-DIAS J., BONTEMS P., BRILL H., CROFT N.M., FISHMAN D.S., FURLANO R.J., GILLET P.M., HOJSAK I., HOMAN M., HUYNH H.Q., JACOBSON K., AMBARTSUMYAN L., OTLEY A.R., KRAMER R.E., MCCREATH G.A., CONNAN V., THOMSON M.A.	PEDIATRIC ENDOSCOPY QUALITY IMPROVEMENT NETWORK QUALITY STANDARDS AND INDICATORS FOR PEDIATRIC ENDOSCOPISTS AND ENDOSCOPISTS IN TRAINING: A JOINT NASPGHAN/ESPGHAN GUIDELINE	<a href="#">READ</a>
LIGHTDALE J.R., WALSH C.M., NARULA P., UTTERSON E.C., TAVARES M., ROSH J.R., RILEY M.R., OLIVA S., MAMULA P., MACK D.R., LIU Q.Y., LERNER D.G., LEIBOWITZ I.H., JACOBSON K., HUYNH H.Q., HOMAN M., HOJSAK I., GILLET P.M., FURLANO R.J., FISHMAN D.S., CROFT N.M., BRILL H., BONTEMS P., AMIL-DIAS J., KRAMER R.E., AMBARTSUMYAN L., OTLEY A.R., MCCREATH G.A., CONNAN V., THOMSON M.A.	PEDIATRIC ENDOSCOPY QUALITY IMPROVEMENT NETWORK QUALITY STANDARDS AND INDICATORS FOR PEDIATRIC ENDOSCOPY FACILITIES: A JOINT NASPGHAN/ESPGHAN GUIDELINE	<a href="#">READ</a>

AUTHORS	TITLE	LINK
LIGHTDALE J.R., WALSH C.M., OLIVA S., JACOBSON K., HUYNH H.Q., HOMAN M., HOJSAK I., GILLET P.M., FURLANO R.I., FISHMAN D.S., CROFT N.M., BRILL H., BONTEMS P., AMIL-DIAS J., UTTERSON E.C., TAVARES M., ROSH J.R., RILEY M.R., NARULA P., MAMULA P., MACK D.R., LIU Q.Y., LERNER D.G., LEIBOWITZ I.H., OTLEY A.R., KRAMER R.E., AMBARTSUMYAN L., CONNAN V., MCCREATH G.A., THOMSON M.A.	PEDIATRIC ENDOSCOPY QUALITY IMPROVEMENT NETWORK QUALITY STANDARDS AND INDICATORS FOR PEDIATRIC ENDOSCOPIC PROCEDURES: A JOINT NASPGHAN/ESPGHAN GUIDELINE	<a href="#">READ</a>
WALSH C.M., LIGHTDALE J.R., MACK D.R., AMIL-DIAS J., BONTEMS P., BRILL H., CROFT N.M., FISHMAN D.S., FURLANO R.I., GILLET P.M., HOJSAK I., HOMAN M., HUYNH H.Q., JACOBSON K., LEIBOWITZ I.H., LERNER D.G., LIU Q.Y., MAMULA P., NARULA P., OLIVA S., RILEY M.R., ROSH J.R., TAVARES M., UTTERSON E.C., AMBARTSUMYAN L., OTLEY A.R., KRAMER R.E., CONNAN V., MCCREATH G.A., THOMSON M.A.	OVERVIEW OF THE PEDIATRIC ENDOSCOPY QUALITY IMPROVEMENT NETWORK QUALITY STANDARDS AND INDICATORS FOR PEDIATRIC ENDOSCOPY: A JOINT NASPGHAN/ESPGHAN GUIDELINE	<a href="#">READ</a>
AZEREDO R., MACHADO M., PEREIRO P., BARANY A., MANCERA J.M., COSTAS B.	ACUTE INFLAMMATION INDUCES NEUROENDOCRINE AND OPIOID RECEPTOR GENES RESPONSES IN THE SEABASS DICENTRARCHUS LABRAX BRAIN	<a href="#">READ</a>
BAIÃO L.F., ROCHA C., LIMA R.C., VALENTE L.M.P., CUNHA L.M.	DEVELOPMENT OF A RATE-ALL-THAT-APPLY (RATA) BALLOT FOR SENSORY PROFILING OF SEA URCHIN (PARACENTROTUS LIVIDUS) GONADS	<a href="#">READ</a>
MARCOS R., ALMEIDA J., MARQUES J., MOREIRA R., DIAS-PEREIRA P., CORREIA-GOMES C., SANTOS M.	CANINE MAST CELL TUMORS: UTILITY OF STEREOLOGIC TOOLS IN CYTOLOGY	<a href="#">READ</a>
SCHROEDER R., SCHWINGEL P.R., CORREIA A.T.	POPULATION STRUCTURE OF THE BRAZILIAN SARDINE (SARDINELLA BRASILIENSIS) IN THE SOUTHWEST ATLANTIC INFERRED FROM BODY MORPHOLOGY AND OTOLITH SHAPE SIGNATURES	<a href="#">READ</a>
NOGUEIRA-RODRIGUES J., LEITE S.C., PINTO-COSTA R., SOUSA S.C., LUZ L.L., SINTRA M.A., OLIVEIRA R., MONTEIRO A.C., PINHEIRO G.G., VITORINO M., SILVA J.A., SIMÃO S., FERNANDES V.E., PROVAZNIK J., BENES V., CRUZ C.D., SAFRONOV B.V., MAGALHÃES A., REIS C.A., VIEIRA J., VIEIRA C.P., TISCORNIA G., ARAÚJO I.M., SOUSA M.M.	REWired GLYCOSYLATION ACTIVITY PROMOTES SCARLESS REGENERATION AND FUNCTIONAL RECOVERY IN SPINY MICE AFTER COMPLETE SPINAL CORD TRANSECTION	<a href="#">READ</a>
MONTEZUMA D., MONTEIRO A., FRAGA J., RIBEIRO L., GONÇALVES S., TAVARES A., MONTEIRO J., MACEDO-PINTO I.	DIGITAL PATHOLOGY IMPLEMENTATION IN PRIVATE PRACTICE: SPECIFIC CHALLENGES AND OPPORTUNITIES	<a href="#">READ</a>
FERREIRA H.P., MOURA D., PEREIRA A.T., HENRIQUES P.C., BARRIAS C.C., MAGALHÃES F.D., GONÇALVES I.C.	USING GRAPHENE-BASED MATERIALS FOR STIFF AND STRONG POLY(ETHYLENE GLYCOL) HYDROGELS	<a href="#">READ</a>
TAPIA J., DUEÑAS A., CHEJE N., SOCLLE G., PATIÑO N., ANCALLA W., TENORIO S., DENOS J., TACO H., CAO W., ALEXANDRINO D.A.M., JIA Z., VASCONCELOS V., CARVALHO M.F., LAZARTE A.	BIOLEACHING OF HEAVY METALS FROM PRINTED CIRCUIT BOARDS WITH AN ACIDOPHILIC IRON-OXIDIZING MICROBIAL CONSORTIUM IN STIRRED TANK REACTORS	<a href="#">READ</a>
BILLER S.J., MUÑOZ-MARÍN M.C., LIMA S., MATINHA-CARDOSO J., TAMAGNINI P., OLIVEIRA P.	ISOLATION AND CHARACTERIZATION OF CYANOBACTERIAL EXTRACELLULAR VESICLES	<a href="#">READ</a>
SILVA A.L.R., GONÇALVES J.M., MORAIS V.M.F., RIBEIRO DA SILVA M.D.M.C.	THERMODYNAMIC PROPERTIES OF 2-MERCAPTO-, 2,5-DIMETHYL- AND 2-MERCAPTO-5-METHYL-1,3,4-THIADIAZOLE	<a href="#">READ</a>
ISLEK Z., UCISIK M.H., KESKIN E., SUCU B.O., GOMES-ALVES A.G., TOMÁS A.M., GUZEL M., SAHIN F.	ANTILEISHMANIAL ACTIVITY OF BNIPDAOCT- AND BNIPDANON-LOADED EMULSOMES ON LEISHMANIA INFANTUM PARASITES	<a href="#">READ</a>
AGUIAR A., MAIA I., DUARTE R., PINTO M.	THE OTHER SIDE OF COVID-19: PRELIMINARY RESULTS OF A DESCRIPTIVE STUDY ON THE COVID-19-RELATED PSYCHOLOGICAL IMPACT AND SOCIAL DETERMINANTS IN PORTUGAL RESIDENTS	<a href="#">READ</a>

**U. PORTO**



**ICBAS** | INSTITUTO DE CIÊNCIAS  
BIOMÉDICAS ABEL SALAZAR  
**SCHOOL OF MEDICINE AND  
BIOMEDICAL SCIENCES**

# ICBAS Publications

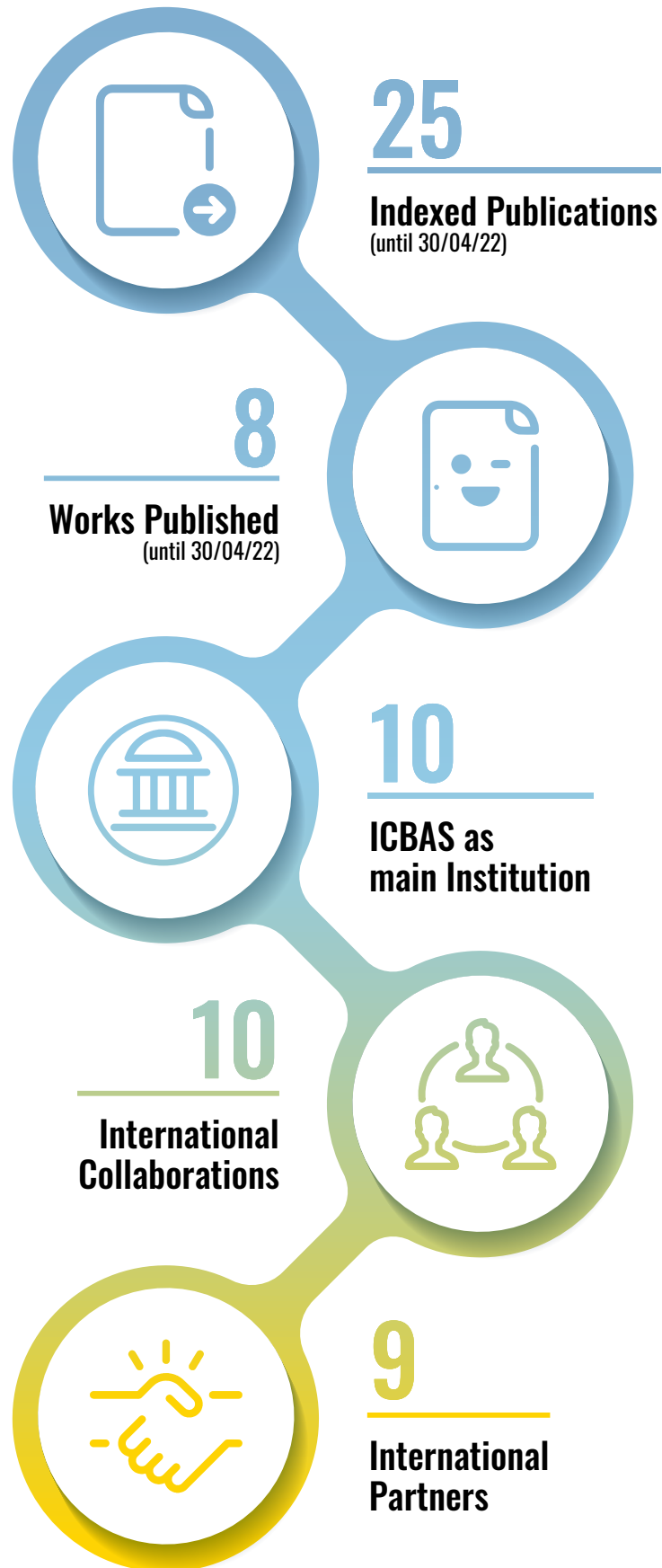
APRIL 2022

→ (indexed until April 30, 2022)







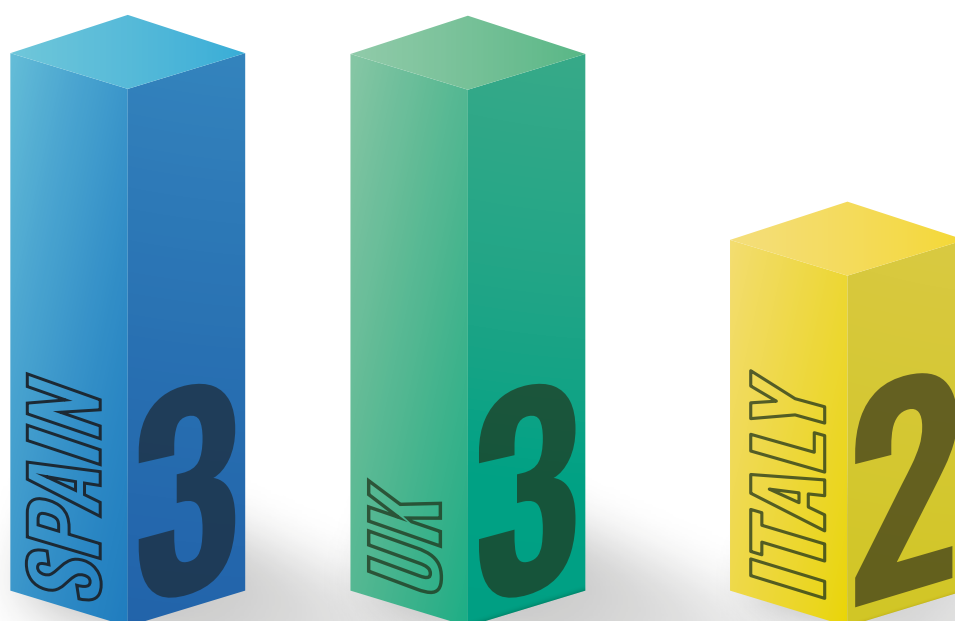


# Top 3 International Partners

ICBAS Publications

APRIL 2022

→ (indexed until April 30, 2022)



AUTHORS	TITLE	LINK
BORDEIRA-CARRIÇO R., TEIXEIRA J., DUQUE M., GALHARDO M., RIBEIRO D., ACEMEL R.D., FIRBAS P.N., TENA J.J., EUFRÁSIO A., MARQUES J., FERREIRA F.J., FREITAS T., CARNEIRO F., GÓMEZ-SKARMETA J.L., BESSA J.	MULTIDIMENSIONAL CHROMATIN PROFILING OF ZEBRAFISH PANCREAS TO UNCOVER AND INVESTIGATE DISEASE-RELEVANT ENHANCERS	<a href="#">READ</a>
BRANCO H., OLIVEIRA J., ANTUNES C., SANTOS L.L., VASCONCELOS M.H., XAVIER C.P.R.	PIRFENIDONE SENSITIZES NCI-H460 NON-SMALL CELL LUNG CANCER CELLS TO PACLITAXEL AND TO A COMBINATION OF PACLITAXEL WITH CARBOPLATIN	<a href="#">READ</a>
CAPAS-PENEDA S., SAAVEDRA TORRES Y., PRINS J.-B., OLSSON I.A.S.	REVIEW   FROM MATING TO MILK ACCESS: A REVIEW OF REPRODUCTIVE VOCAL COMMUNICATION IN MICE	<a href="#">READ</a>
CORDEIRO L., CABRITA A.R.J., OLIVEIRA H.M., MAIA M.R.G., RODRIGUES J.A., FONSECA A.J.M., VALENTE I.M.	A NOVEL APPROACH FOR MONITORING THE VOLATILE METABOLOME IN BIOLOGICAL SAMPLES FROM RUMINANTS THROUGH MINIATURIZED LIQUID-LIQUID EXTRACTION AND MULTICLASS GAS CHROMATOGRAPHY ANALYSIS	<a href="#">READ</a>
DE SÁ J.D.M., KUMLA D., DETHOUP T., KIJJOA A.	BIOACTIVE COMPOUNDS FROM TERRESTRIAL AND MARINE-DERIVED FUNGI OF THE GENUS NEOSARTORYA †	<a href="#">READ</a>
FLORES A.R., RÊMA A., MESQUITA J.R., TAULESCU M., SEIXAS F., GÄRTNER F., AMORIM I.	E-CADHERIN EXPRESSION IN CANINE GASTRIC CARCINOMAS: ASSOCIATION WITH CLINICOPATHOLOGICAL PARAMETERS	<a href="#">READ</a>
GHILARDI C., MOREIRA-BARBOSA C., BRUNELLI L., OSTANO P., PANINI N., LUPI M., ANASTASIA A., FIORDALISO F., SALIO M., FORMENTI L., RUSSO M., ARRIGONI E., CHIARADONNA F., CHIORINO G., DRAETTA G., MARSZALEK J.R., VELLANO C.P., PASTORELLI R., BANI M., DECIO A., GIAVAZZI R.	PGC1A/B EXPRESSION PREDICTS THERAPEUTIC RESPONSE TO OXIDATIVE PHOSPHORYLATION INHIBITION IN OVARIAN CANCER	<a href="#">READ</a>
LIMA T., BARROS A.S., TRINDADE F., FERREIRA R., LEITE-MOREIRA A., BARROS-SILVA D., JERÓNIMO C., ARAÚJO L., HENRIQUE R., VITORINO R., FARDILHA M.	APPLICATION OF PROTEOGENOMICS TO URINE ANALYSIS TOWARDS THE IDENTIFICATION OF NOVEL BIOMARKERS OF PROSTATE CANCER: AN EXPLORATORY STUDY	<a href="#">READ</a>
LOURENÇO C., CONCEIÇÃO F., JERÓNIMO C., LAMGHARI M., SOUSA D.M.	STRESS IN METASTATIC BREAST CANCER: TO THE BONE AND BEYOND	<a href="#">READ</a>
MARTA A., MARQUES J.H., FERREIRA A., COELHO J., BEIRÃO J.M.	CHOROIDDAL INVOLVEMENT IN HEREDITARY TRANSTHYRETIN AMYLOIDOSIS PATIENTS	<a href="#">READ</a>
MARTINS-FERREIRA R., LEAL B.G., COSTA P.P.	REVIEW   THE POTENTIAL OF CIRCULATING CELL-FREE DNA METHYLATION AS AN EPILEPSY BIOMARKER	<a href="#">READ</a>
MONTEIRO L., DO AMARAL B., DELGADO L., GARCÉS F., SALAZAR F., PACHECO J.J., LOPES C., WARNAKULASURIYA S.	RODOPLANIN EXPRESSION INDEPENDENTLY AND JOINTLY WITH ORAL EPITHELIAL DYSPLASIA GRADE ACTS AS A POTENTIAL BIOMARKER OF MALIGNANT TRANSFORMATION IN ORAL LEUKOPLAKIA	<a href="#">READ</a>
MOREIRA A.M., FERREIRA R.M., CARNEIRO P., FIGUEIREDO J., OSÓRIO H., BARBOSA J., PRETO J., PINTO-DO-Ó P., CARNEIRO F., SERUCA R.	PROTEOMIC IDENTIFICATION OF A GASTRIC TUMOR ECM SIGNATURE ASSOCIATED WITH CANCER PROGRESSION	<a href="#">READ</a>
MORGADO A.C.T., DO VALE B., RIBEIRO P., COUTINHO T., SANTOS-SILVA S., DE SOUSA MOREIRA A., RODRIGUES F.T., COELHO A.C., LOPES A.P., MESQUITA J.R., CARDOSO L.	FIRST REPORT OF HUMAN THELАЗIA CALLIPAEDA INFECTION IN PORTUGAL	<a href="#">READ</a>
PEIXOTO A., MIRANDA A., SANTOS L.L., FERREIRA J.A.	REVIEW   A ROADMAP FOR TRANSLATIONAL CANCER GLYCOIMMUNOLOGY AT SINGLE CELL RESOLUTION	<a href="#">READ</a>
PEREIRA R., COSTA M., VELASCO C., CUNHA L.M., LIMA R.C., BAIÃO L.F., BATISTA S., MARQUES A., SÁ T., CAMPOS D.A., PEREIRA M., JESUS D., FERNÁNDEZ-BOO S., COSTAS B., PINTADO M., VALENTE L.M.P.	COMPARATIVE ANALYSIS BETWEEN SYNTHETIC VITAMIN E AND NATURAL ANTIOXIDANT SOURCES FROM TOMATO, CARROT AND CORIANDER IN DIETS FOR MARKET-SIZED DICENTRARCHUS LABRAX	<a href="#">READ</a>
PEREIRA S.C., ESPERANÇA I.F., PINTO S., BARROS A., SOUSA M., ALVES M.G., OLIVEIRA P.F.	PREGNANCY ACHIEVEMENT BY MEDICAL ASSISTED REPRODUCTION IS CORRELATED TO THE G PROTEIN-COUPLED RECEPTOR 30 MRNA ABUNDANCE IN HUMAN SPERMATOZOEA	<a href="#">READ</a>
PINELLO K., PIRES I., CASTRO A.F., CARVALHO P.T., SANTOS A., DE MATOS A., QUEIROGA F., CANADAS-SOUSA A., DIAS-PEREIRA P., CATARINO J., FAÍSCA P., BRANCO S., LOPES C., MARCOS F., PELETEIRO M.C., PISSARRA H., RUIVO P., MAGALHÃES R., SEVERO M., NIZA-RIBEIRO J.	CROSS SPECIES ANALYSIS AND COMPARISON OF TUMORS IN DOGS AND CATS, BY AGE, SEX, TOPOGRAPHY AND MAIN MORPHOLOGIES. DATA FROM VET-ONCONET	<a href="#">READ</a>
RIBAS T.C.F., MESQUITA R.B.R., MACHADO A., MIRANDA J.L.A., MARSHALL G., BORDALO A., RANGEL A.O.S.S.	A ROBUST FLOW-BASED SYSTEM FOR THE SPECTROPHOTOMETRIC DETERMINATION OF CR(VI) IN RECREATIONAL WATERS	<a href="#">READ</a>
ROCHA M.J., ROCHA E.	SYNTHETIC PROGESTINS IN WASTE AND SURFACE WATERS: CONCENTRATIONS, IMPACTS AND ECOLOGICAL RISK	<a href="#">READ</a>
SILVA F., PEREIRA T., NEVES I., MORGADO J., FREITAS C., MALAFAIA M., SOUSA J., FONSECA J., NEGRÃO E., DE LIMA B.F., DA SILVA M.C., MADUREIRA A.J., RAMOS I., COSTA J.L., HESPANHOL V., CUNHA A., OLIVEIRA H.P.	TOWARDS MACHINE LEARNING-AIDED LUNG CANCER CLINICAL ROUTINES: APPROACHES AND OPEN CHALLENGES	<a href="#">READ</a>
SILVA-CARVALHO R., LEÃO T., GAMA F.M., TOMÁS A.M.	COVALENT CONJUGATION OF AMPHOTERICIN B TO HYALURONIC ACID: AN INJECTABLE WATER-SOLUBLE CONJUGATE WITH REDUCED TOXICITY AND ANTI-LEISHMANIAL POTENTIAL	<a href="#">READ</a>
SILVA-GOMES R., MAPELLI S.N., BOUTET M.-A., MATTIOLA I., SIRONI M., GRIZZI F., COLOMBO F., SUPINO D., CARNEVALE S., PASQUALINI F., STRAVALACI M., PORTE R., GIANATTI A., PITZALIS C., LOCATI M., OLIVEIRA M.J., BOTTAZZI B., MANTOVANI A.	DIFFERENTIAL EXPRESSION AND REGULATION OF MS4A FAMILY MEMBERS IN MYELOID CELLS IN PHYSIOLOGICAL AND PATHOLOGICAL CONDITIONS	<a href="#">READ</a>
SOUSA A.P., COSTA R., ALVES M.G., SOARES R., BAYLINA P., FERNANDES R.	REVIEW   THE IMPACT OF METABOLIC SYNDROME AND TYPE 2 DIABETES MELLITUS ON PROSTATE CANCER	<a href="#">READ</a>
TRIGO A., SILVA P.	REVIEW   SUSTAINABLE DEVELOPMENT DIRECTIONS FOR WINE TOURISM IN DOURO WINE REGION, PORTUGAL	<a href="#">READ</a>